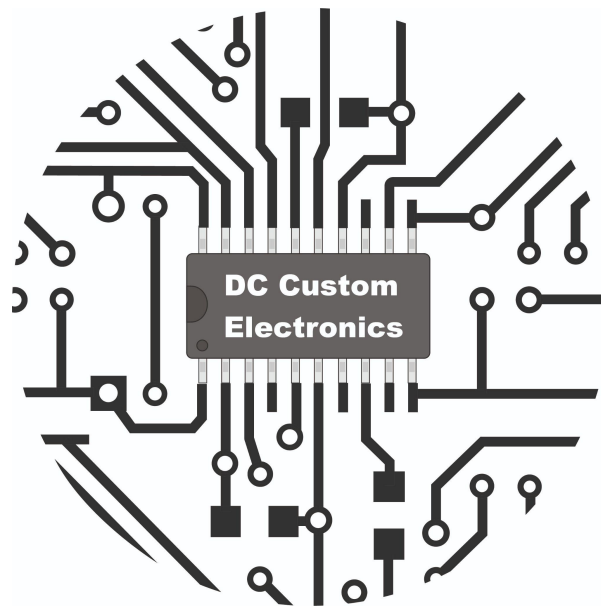


Ditch light flasher

By Dc Custom Electronics



Basic wiring guide

Specifications:

Parameter	Condition	Min	Max	Unit
Current draw	Idle	0.01	0.05	A
	Max load	---	10	A
Voltage input	---	7.5	30	VDC
Output (total)	---	---	10	A
Output (individual)	---	---	5	A

Wiring:

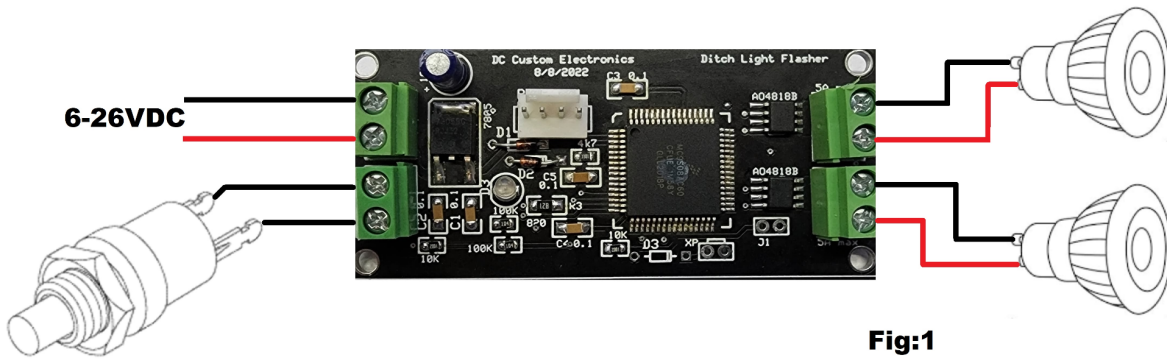


Fig:1

** Note: Trigger is Sink only. This means to trigger, the input must be connected to 0V or "ground" To wire this with a horn see Figure 2

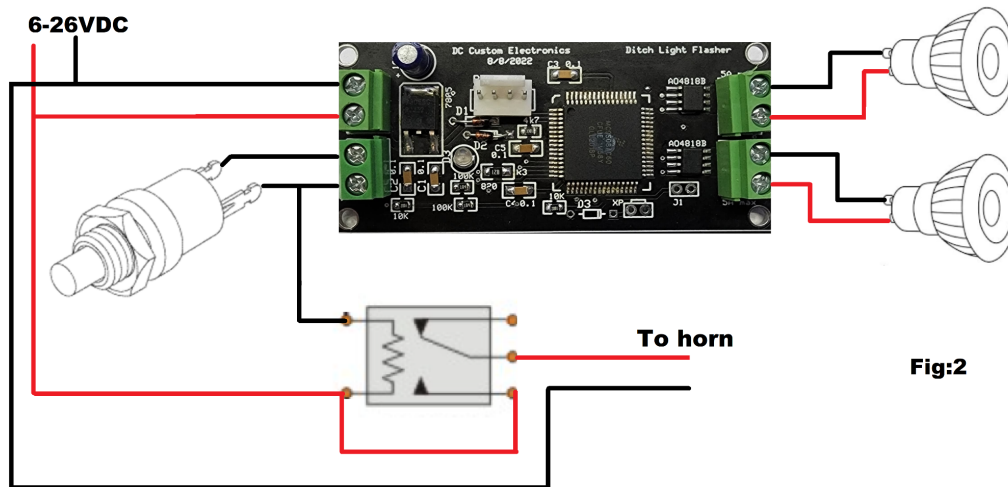


Fig:2